

Ashburton Wildlife Weekend

15/16
June

Programme

19 Open Wildlife Gardens

Crafts

Kids Activities

Music Talks

Wildlife Gardening Advice

Treasure Hunt

Gardeners'

Question Time

Growing Space-

Secret Garden

Sound Bath

**Main
Activity Hub**
Ashburton Arts
Centre
Sat 15th (11-3)



**Celebrating
nature
on our
doorstep**

Ashburton Wildlife Weekend aims to celebrate nature that can be found on our doorstep and raise awareness of how we can help it thrive.

The events and Open Gardens will help people to connect with others, share knowledge and practical ideas and encourage and inspire more people to make a difference.

With thanks to:



This is a collaborative event between Ashburton Climate Emergency, Growing Space Project, Action on Climate Teignbridge, and is supported by Ashburton Town Council and Ashburton Arts Centre. We thank all the organisations, gardeners and people supporting this event with their expertise and enthusiasm.



Wildlife Gardeners' Question Time

Ashburton
Art's Centre

Bar opens 6.30pm
Question Time 7pm
Shared supper 8pm

Dont miss our first event! Wed 12th June - 7pm

How can we improve our gardens, fields and community spaces to help nature thrive? How can we make our community abundant for wildlife and people?

Join our panel of amazing local experts for this special version of Gardeners' Question Time and gather with other local wildlife lovers to ask questions, explore ideas, share food and celebrate nature. Bring a dish.

Full details and booking info:

wegottickets.com/ashburtonarts (10% booking fee) or boxoffice@ashburtonarts.org.uk

Hub Programme at Ashburton Arts Centre

Saturday 15 June, 11-3pm

Presentations and performances in the main hall

11:30-12:30 Designing a Wildlife Garden - Presentation with Q&A by Elaine Hughes, landscape designer, RHS Hampton Court Flower Show gold medalist and former in-house Wildlife Gardener for the London Wildlife Trust

If you have always liked the idea of gardening for wildlife but don't know where to start, then this presentation will give you an overview of the basics of gardening with wildlife in mind. She will share lots of easy ideas to get you started.

1 - 1:30 Songs Inspired by Nature - Performance by acappella choir The Big Skirts led by vocalist/composer India Bourne

Performance by a cappella choir The Big Skirts, an all-female choir led by musician and performer India Bourne. As well as enjoying a soothing folksong or lullaby, the group doesn't shy away from more difficult arrangements and harmonies, creating a joyful, relaxed and therapeutic space.

3-4pm Making it Home to Nature: Folk duo Roz Brady and Si Barron Short film introduction, 'Musical Garden,' by Rachel Miller

We are excited to present the acclaimed duo BarronBrady, known for their fresh acoustic style, English folk and original repertoire, teaming up with Rachel Miller in this special performance inspired by the nature around their Dartmoor homes. **Tickets-AshburtonArts Centre.**

Sunday A Musical Garden workshop with musician and artist

11:30-1pm Rachel Miller in her home/garden

This creative music and art workshop looks at plants in a new way by focusing on their 'musical qualities'. The visual shapes can be seen as musical gestures - the rhythmic repetition of leaves, the sharp staccato or soft gentle line, the joyful tilt of a daffodil's trumpet. We will focus on a few different plants - making quick sketches in pencil or charcoal to develop awareness of the musical structures - and then we will use these to create music which represent them. No experience necessary. Instruments provided. Donations to charity. Book with Rachel - rachelmillergonski@icloud.com. Only 6 places.

time to be confirmed

More activities

Upstairs at the Arts Centre

- 11 - 11:30am** **The Wonderweeds, with Claire Brown**
Come and join the author of The Wonderweeds for an interactive session with reading and story basket, where she will bring weeds to life, opening our eyes to the wonders that are weeds. Ages 4-7 with parent /carer. Learn how you can go on a weedy trail to Growing Space and Woodlanders some of the other wildlife sites.
- 11 - 1pm** **Children's drop-in crafts with Skylarks Nursery School**
Drop in to create your own felt flowers or bees. Up to 8 children at a time. (typically taking about 15 minutes)
- 11-1 pm** **Make a Bee Home with The Pollinator Gardener Hayley Herridge**
Make a solitary bee home to take away with local wildlife gardener Hayley, The Pollinator Gardener.
- 1-2:45pm** **Lucy's Lichen Laboratory**
Join local lichen enthusiast Lucy Lepchani for this introduction to lichens workshop (an in-depth workshop for older children and adults.) Get a magnified look at some of their identifying features, then join Lucy for a walk to find some different types of lichens living 'in the field' in some of their favoured locations around Ashburton. (For up to 12 people)
- 11-3pm** **Wild Eye View of Ashburton**
See Ashburton from a wild perspective with this compilation of film and still shots of wildlife in gardens around Ashburton, taken by local residents - from bees and butterflies to slow worms and hedgehogs.

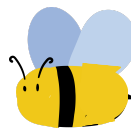
New talks and activities are currently being organised so check out the timetable in the Arts Centre on the day!

Wildlife Friendly Gardening Award – Devon Wildlife Trust

Throughout the weekend we will be promoting the Devon Wildlife Trust Wildlife Friendly Garden award.

Get your garden buzzing with wildlife and you could qualify for a free plaque to display in your garden!

Gardening for wildlife doesn't need to be complicated or mean abandoning your secateurs and surrendering to a bramble invasion! There are simple ways of inviting wildlife in. Pick up more info at our Arts Centre Hub, one of our Open Gardens or visit the Devon Wildlife Trust website.



Organisations at the Arts Centre Hub

Various people and organisations will be at the event or have materials available with advice, support and volunteering opportunities...



other town centre activities 15th June

10:30 - 2pm



Growing Space Secret Garden. behind the Royal British Legion Hut, next to the recreation ground

Come and visit this little secret gem hidden away behind St Andrews Church. Discover what insects live at Growing Space. Night Cam footage of our resident Hedgehog. Butterfly Splat Activity.

Free seeds and flower donations to promote the start of our project to 'share the joy of flowers'. And of course what we do best serving drinks and cakes!

11 - 3pm



Woodlanders Wildlife Open Day

We are going to open our spacious circle garden that has a lovely grass area, wild flower garden , child play trail and mud kitchen. We will be offering a plant your own flower seeds to take home and grow, utilising reused pots. Also a short scavenger hunt for young children so they can explore the garden.

2-3.30pm

Sound Bath, at Growing Space, Royal British Legion Hut with Sally Wilson

Drop in and experience a Sound Journey within nature. Allow yourself to be immersed in sounds from the Gong, singing bowls, monochord and other acoustic instruments whilst being in nature. This can leave you feeling relaxed, rejuvenated, reconnected to oneself and refreshed. Donations welcomed.

Anytime

Where Be the Bees? Join our bee treasure hunt across town and spot as many stripy pollinators as you can. If you find all our busy buzzing bees hiding in the shop windows, you will be given some bee-related goodies. Collect your bee spotting sheet from the Arts Centre and hand it back on the day!

Open Wildlife Gardens

We have 19 amazing and varied Open Gardens all across town for you to visit and enjoy! Please see the map on the back. One thing they have in common is the owners have created their gardens with wildlife in mind. We hope that they inspire you with ways to attract more wildlife to your garden.

Please note the various opening times/days and access and safety details.

Several of the larger wildlife sites are offering tours (13, 14, 18 & 19).

Can you or your little people spot the big bee hiding in each garden?



The Mews House, East Street (10:30-4:30pm Sat only please)

What 3 Words: tumblers.rooms.coasting

Our garden had been untouched for 4 years before we moved in in 2021. We have discovered many plants, trees and features throughout our journey of creating a beautiful space for our family and wildlife to share. Of note, the garden contains a magnificent ginkgo tree which we believe to be one of the largest in England.

Please knock at the property for permission to enter the garden.

Wildlife Pond, trees and hedges, woodpiles, compost area, fruit and veg.

Dogs allowed. No wheelchair access. Uneven paths, pond and steps.





59 Home Park (All Sat and Sun)

What 3 Words: kinder.opts.gently



Our garden is very small but a good example of how you can convert a grass patch into varied habitats with food for wildlife, whilst also growing a little fruit and veg for our family. We make use of height to have more growing space with dwarf apple trees and climbers. It is full of many different insects, visiting hedgehogs and the rose provides a great place for sparrows and blackbirds. I enjoy letting wildflowers self-seed along the pavement cracks and allowing self-sown plants to grow.

Open access, come and go as you please.

Dogs left at gate please. Wheelchair view from pavement. Uneven paths. Feel free to knock & see if we are in & we can show you round.



9 Home Park, (Sat and Sun, 1-5pm)

Please knock at the door and you can be shown around and given a little tour of the front and back garden.

Pond, bird feeder, wide range of plants annuals and perennials, slow worm, greenhouse, veg patch, lots of insect life.

Come and enjoy the garden which is a passion and get shown around and maybe take a plant home with you!



Dogs on leads allowed. Partial wheelchair access. Quite narrow, uneven surfaces.



26 Cooks Close Open (Sat and Sun, 10-2 pm)



The garden has many places for wildlife, I feed the birds and have a home for the hedgehog. There are areas of longer grass and many bushes and trees I also have a pond with frogs.

Open access, come and go as you please.

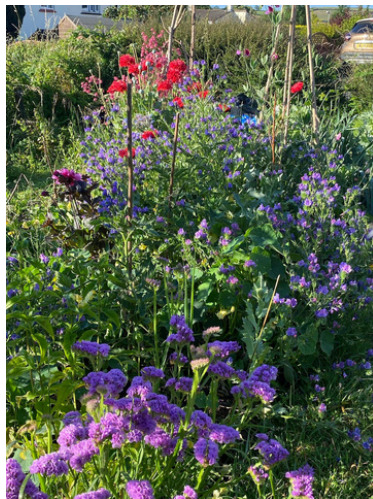
No dogs due to cats!

Careful - lots of steps.



19 Cooks Close Garden Allotment Plot (10-4pm Sat&Sun)

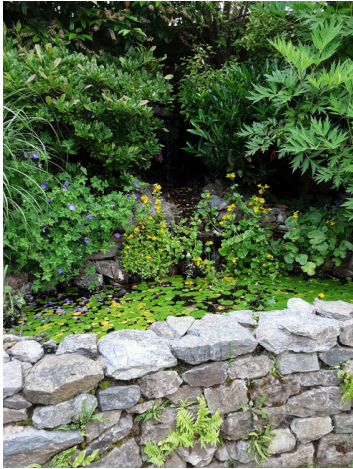
Small experimental allotment plot, taken on about 4 years ago, when it was just an empty patch of grass, though surrounded by hedges. It now has a mixture of veg, fruit, flowers and herbs. I leave a lot to self seed so you can expect anything! Slow worms are abundant and the odd frog and a hedgehog does roam. Patches of long grass are left to house various insects and refuge for the slow worms. Piles of logs sticks etc are also left to house insects and small reptiles. A few fruit trees have been planted which now are a place for birds to shelter and feed on.



Open access, come and go as you please. No to dogs as I have 2 old cats and I'm afraid there are a lot of steps. Uneven paths, sloped plot, sticks along edges of borders could be trip hazard. Low branches on trees.



29 Eastern Road, TQ13 7AP (Sat & Sun, 11am till 4pm)



Although just a small garden we have many creatures visiting; at night the bats and later a family of hedgehogs, and lots of mice!! Amongst our daytime visitors are a squirrel and lots of birds, large ones being rooks, magpies, jackdaws and crows.

There is a shallow pool bellow the waterfall, which attracts lots of smaller birds, blackbirds , robins, wrens, and our resident families of noisy sparrows. We have pigeons and a devoted pair of collared doves, who all come to drink and have a good bath.

The pond is full of frogs, newts ,and a toad, and the dragonflies and damselflies are regular visitors. There's lots of stuff for bees and butterflies too, so never a dull moment in our garden !!!

Open Entry. Come and go as you please. Wheelchair access from Eastern Road. Other access from back lane of Miners Close (off Balland Lane.)



32 Emmets Park (10am - 2pm Sat and Sun)

What 3 Words: Elect.pickle.cheetahs

Managed wildness, an example of a wildlife garden that is manageable with a busy life and a love of wildlife. Mixture of fruit, veg, flowers for pollinators and natural areas. Various different habitats, some managed some left. A wildlife pond. A compost bay. Trees and bird feeding areas and bird homes.



Dogs on a lead. Some wheelchair access. Uneven paths. Come round the side of the house. You are welcome.



12 Robourough Gardens (1.30pm - 4.30pm Sat & Sun)

What 3 Words: shin.succumbs.midfield



'Meadow' with fruit trees in the front garden which is mown once or twice a year, with a deep pond, and thick hedge for nesting birds - please keep to the mown paths in the front garden.

The back garden has a greenhouse, 2 small ponds, a few veg, wildlife houses and nest boxes, flower beds for pollinators. A lot of water butts to store rainwater to water greenhouse and plants.

Children must be accompanied by an adult - due to 3 ponds one of which is quite deep. No dogs. Sorry, not wheelchair accessible. Come in and view front garden, for access to back garden go to top of drive and enter through conservatory door by garage - if it's raining you can at least look at the back garden from the conservatory!



9) 2 Rock Park (9-5 Sat and Sun)

What 3 Words: jingles.worlds.enlighten

Newly planted wildlife garden!
Extended 1960s bungalow with front and rear gardens being modified to enhance biodiversity (work commenced Jan 2024). Wildflower meadow area on site previously used as a car park in the front garden.



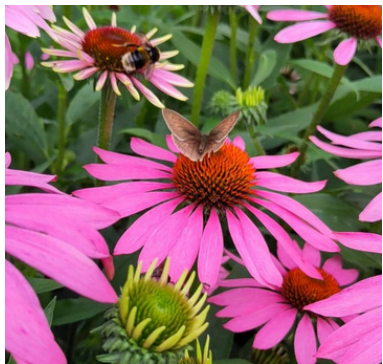
Lawn previously intensively mowed by machine, now being left to grow and diversify, cut irregularly by sickle and scythe. 7 new fruit trees. Partial conversion of rear lawn into vegetable patch with newly-planted native hedge.

Dogs can be tied at lampost. Limited wheelchair access onto drive. Uneven paths. Please no access to decking or raised area of the back garden to the rear of the house.



Cuddyford Meadow, Rew Rd (Sat & Sun 1pm- 4.30pm)

What 3 Words: Spending.dock.awestruck



Market Garden with vegetables and cut flowers, plus lots of flowers for the benefit of pollinators and other insects, lots of wild spaces, trees, orchard. Wildflower Area, trees, hedges, woodpiles, long grass, compost area, fruit and veg.

Open access, come and go as you please.

Dogs on leads allowed. Wheelchair access to some areas. Uneven paths.



Fourways, Rewlea Cross (Sat and Sun 1-5pm)

What 3 Words: keys.joystick.packet

Our garden is roughly an acre surrounding a semi detached house. It is divided into different areas which we have been gardening organically for over 30 years. It has grown and changed with our family and we have built upon the design of previous owners. This year it is lacking attention with neglected wild areas and other cultivated sections. normally hens, and a goat, insect houses.



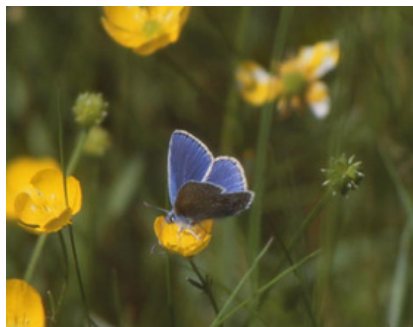
Please knock at the door for permission to enter the garden. Garden tours available.

Children welcome if well behaved. No dogs in garden but can be tied up in drive (under shade). Some wheelchair access. Steps, uneven paths, tools and machinery around. Some seats available for contemplation.



Barn Owl Trust Tour (Sat 3pm - 4.30/5pm)

What 3 Words: fleet.notes.refreshed



The Barn Owl Trust purchased 26-acres of intensively grazed pasture in 2001. Over the last 20+ years the management of the land has encouraged a variety of flora and fauna that live on and visit the site. Butterflies, bees, birds and mammals flourish and we now have a wildlife rich nature reserve. The tour is 1.5 -2 hours.

Booking via the BOT office – info@barnowltrust.org.uk or 01364 255256.



2 Holne or Hele Cross (Sat & Sun 12-5)

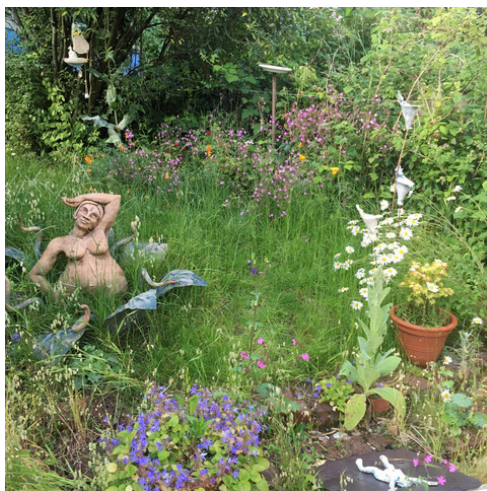
What 3 Words: shepherdess.backyards.encourage

Verdant and wildish! Lots of perennials, trees and bushes, overgrown corners...some weeds! A pond and some boggy areas. Bird boxes and bug hotels. Plants that support wildlife.

Open access, come and go as you please.

No dogs unless on leads and very well behaved.

Uneven paths, Loose heavy objects, Pond, Steps. Partial wheelchair access





Front garden, 16 Old Manor Close (Sat and Sun 1pm-6pm)

What 3 Words: Oxidation.cascaded.symphonic



This front garden had some lovely trees and shrubs when we moved in but was just a bare strip of grass. I wanted to make a beautiful front garden which was good for wildlife as well as lots of fruit and veg and flowers. The beautiful maples that were here give it a bit of a Japanese feel especially now with the pond, bridge and solar pump waterfall.

Open access, come and go as you please.

Art exhibition of botanical paintings of the plants in the garden is open free of charge as an open studio in the front room opening onto the garden. Children welcome but they must not go on the bridge. No dogs. Wheelchair access.

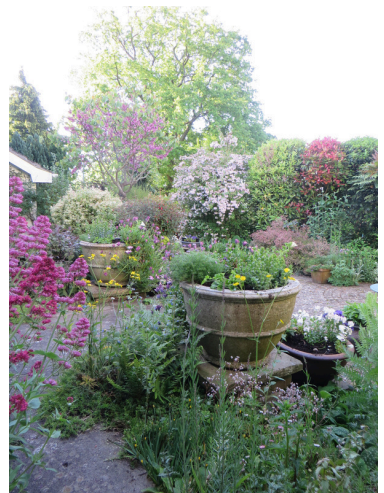


Garden and Artists studio at 24 Old Manor Close, (15th & 16th June. 1pm - 6pm)

A private landscaped garden on 3 sides of the house. A shrub enclosed front patio area with summer planted pots. The back garden on 2 levels includes a lawn and patio surrounded by mixed beds of wild flowers (at different times of the year.) trees, shrubs, perennials, annuals, and pots. Open access, come and go as you please.

No dogs. Loose heavy objects, Steps.

June Arnold PS SWAc. Visitors are welcome to visit my working studio in the house at the same time as a visit to the garden.





Druid Wood Tour

**(Sat 22nd June, 2.30pm
& Sun 23rd, 10.30 am)**



Druid Wood is a 23 acre, off grid, biodiverse site just north of Ashburton, consisting of an old deciduous plantation, 10 acres of new woodland, copse and other tree cover, previously pasture. There is an edible/medicinal orchard, managed hazel coppice and other trees for coppicing, nut trees, veg, small nursery and composting area.

Over 2 acres has been left for nature and wildlife and there are many animals living on the land and producing young. eg. badgers, foxes, deer and many bird species and amphibians. Guided Tour, traffic cone placed at the woodland entrance. Limited parking, please lift share, walk or cycle.

Please phone or text (07973 412681) for confirmation of visit and directions. bring suitable footwear and clothing & drinks. There is a compost loo on site

Please note these tour dates differ from the Wildlife Weekend

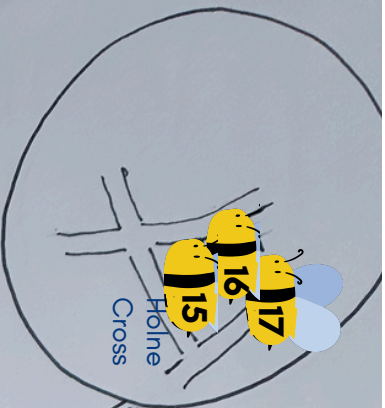


Sparnham Fields Tour (Thurs 27 June, 7pm-8pm or 8pm-9pm)

In 2010, a small group of Ashburton families bought a 5 acre field and transformed it from a relatively barren site with very limited wildlife into a productive growing space and wildlife



haven abundant with wild flowers, birds, mammals, insects, reptiles and amphibians. The plot contains a wildflower meadow, young woodland, forest garden and organic veg area. We are running two tours, particularly for people interested in exploring collective land ownership as a means to food production and nature restoration. For more info and booking visit sparnhamtour.eventbrite.co.uk



Ashburton

Wildlife Garden

Venues



Sparham Fields



Terrace Walk

River Ashburn

The Rec

A38

PLYMOUTH

EXETER

